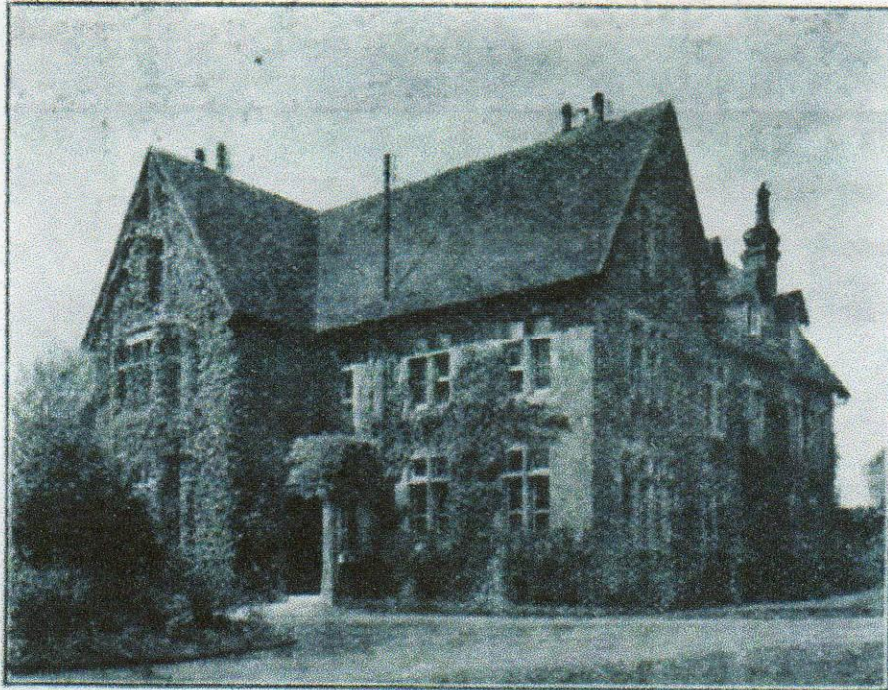


SOUTH BEACON,

HADLOW DOWN, BUXTED, SUSSEX.



Established 1893, for the reception of Gentlemen suffering from nervous ailments, but not sufficiently ill for Asylum treatment.

40 acres, comprising Golf Ground.

Motoring, Cricket, Lawn Tennis, Croquet, Bowls, etc.

Terms from Three Guineas per week.

Mr. PHILIP H. HARMER,

South Beacon, Hadlow Down,

Buxted, Sussex.

STATIONS :

LONDON, BRIGHTON AND
SOUTH COAST RAIL-
WAY.

{ BUXTED (3 miles).
MAYFIELD (4 miles).
HEATHFIELD (4 miles).

Telegrams : HADLOW DOWN (half mile).